



# Connah's Quay Low Carbon Power

## Indicative Site Layout

Planning Inspectorate Reference: EN010166

Document Reference: EN010166/APP/7.11

Planning Act 2008 (as amended)

Infrastructure Planning (Applications: Prescribed Forms and Procedure) Regulations

2009 - Regulation 5(2)(o)

Revision 01

March 2026

- KEY**
- A** Up to two combined cycle gas turbine plants
  - B** Up to two carbon dioxide capture plants
  - C** Combined cycle gas turbine and carbon dioxide capture plant cooling and utilities infrastructure
  - D** Natural gas reception facility
  - E** Carbon dioxide interface facility
  - F** Administration, control room and stores
  - G** New surface water outfall
  - H** Contractors' facilities



© Crown Copyright 2025. All rights reserved. Ordnance Survey Licence AC0000808122



**PROJECT**  
**Connah's Quay Low Carbon Power**

**CONSULTANT**  
 Garry Stewart Design Associates Ltd  
 01 Meadlake Place,  
 Thorpe Lea Road,  
 Egham, Surrey  
 TW20 8HE, United Kingdom  
 www.gsd.co.uk

- GENERAL NOTES**
1. ALL DIMENSIONS IN METRES UNLESS STATED OTHERWISE.
  2. DO NOT SCALE FROM THIS DRAWING USE ONLY PRINTED DIMENSIONS.
  3. THE INDICATIVE SITE LAYOUT AS SHOWN IS INDICATIVE ONLY AND WILL BE SUBJECT TO CHANGE AS PART OF DETAILED DESIGN DEVELOPMENT. ANY CHANGES WILL BE LIMITED TO WITHIN THE ORDER LIMITS AND WILL BE IN COMPLIANCE WITH THE WORKS PLANS (EN010166/APP/2.4), PARAMETER PLANS (EN010166/APP/2.5) AND OTHER APPROPRIATE PLANS OR CONSTRAINTS INCLUDED WITHIN THIS APPLICATION.
  4. FOR DETAILS OF RETAINED AND PROPOSED LANDSCAPE, REFER TO INDICATIVE LANDSCAPE AND BIODIVERSITY PLAN: EN010166/APP/2.15

- LEGEND**
- Order Limits
  - Landscaping

**ISSUE/REVISION**

I/R	DATE	DESCRIPTION
01	01/03/2026	REVISION 1
00	27/06/2025	FIRST ISSUE

**PROJECT NUMBER**  
 60768754

**ISSUE PURPOSE**  
 DCO Application

**DATE**  
 March 2026

**SHEET TITLE**  
 Indicative / Not for Approval (Drawing 1 of 2)  
 Site Layout - Main Development Area

**LEGISLATION REFERENCE**  
 APFP Regulations 5(2)(o)

**DOCUMENT REFERENCE NUMBER**  
 EN010166/APP/7.11

This drawing has been prepared for the use of GSDA's client. It may not be used, modified, reproduced or relied upon by third parties, except as agreed by GSDA or as required by law. GSDA accepts no responsibility, and denies any liability whatsoever, to any party that uses or relies on this drawing without GSDA's express written consent. Do not scale this document.

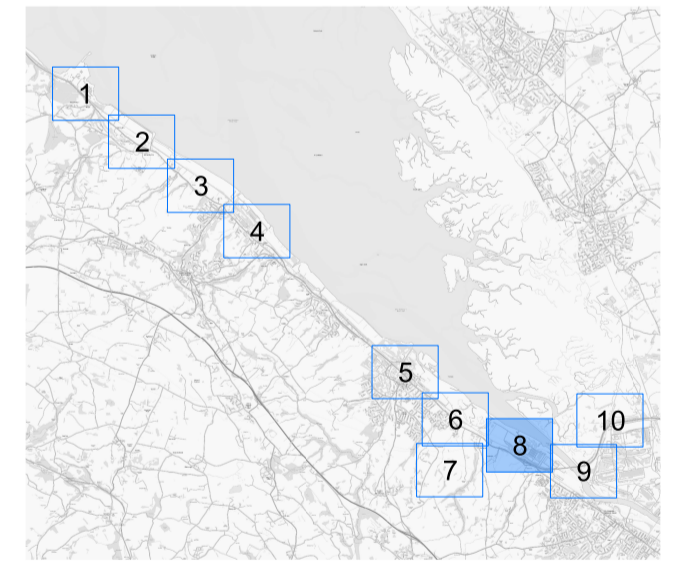
**PROJECT**  
**Connah's Quay Low Carbon Power**

**CONSULTANT**  
Garry Stewart Design Associates Ltd  
01 Meadlake Place,  
Thorpe Lea Road,  
Egham, Surrey  
TW20 8HE, United Kingdom  
www.gsda.co.uk

- GENERAL NOTES**
- ALL DIMENSIONS IN METRES UNLESS STATED OTHERWISE.
  - DO NOT SCALE FROM THIS DRAWING USE ONLY PRINTED DIMENSIONS.
  - THE INDICATIVE SITE LAYOUT AS SHOWN IS INDICATIVE ONLY AND WILL BE SUBJECT TO CHANGE AS PART OF DETAILED DESIGN DEVELOPMENT. ANY CHANGES WILL BE LIMITED TO WITHIN THE ORDER LIMITS AND WILL BE IN COMPLIANCE WITH THE WORKS PLANS (EN010166/APP/2.4), PARAMETER PLANS (EN010166/APP/2.5) AND OTHER APPROPRIATE PLANS OR CONSTRAINTS INCLUDED WITHIN THIS APPLICATION.
  - WORK 1(G) AND WORK 1(H) ARE NOT SHOWN AS THESE REFER TO DEMOLITIONS OF EXISTING ASSETS AND SO WILL NOT BE PRESENT IN THE INDICATIVE SITE LAYOUT. WORK 1(I) IS NOT SHOWN AS THIS REFERS TO ANCILLARY WORKS FOR NUMEROUS AND VARIOUS TYPES OF MINOR STRUCTURES AND ASSETS WHICH MAY BE PRESENT ACROSS MULTIPLE LOCATIONS ACROSS THE INDICATIVE SITE LAYOUT AND IT IS NOT BENEFICIAL TO UNDERSTANDING OF THE INDICATIVE SITE LAYOUT TO DISPLAY IN FULL.

- LEGEND**
- Order Limits
  - Work No. 1: Electricity Generating Station

**LOCATION PLAN**



**ISSUE/REVISION**

I/R	DATE	DESCRIPTION
01	01/03/2026	REVISION 1
00	27/06/2025	FIRST ISSUE

**ISSUE PURPOSE**

DCO Application

**DATE**

March 2026

**PROJECT NUMBER**

60768754

**LEGISLATION REFERENCE**

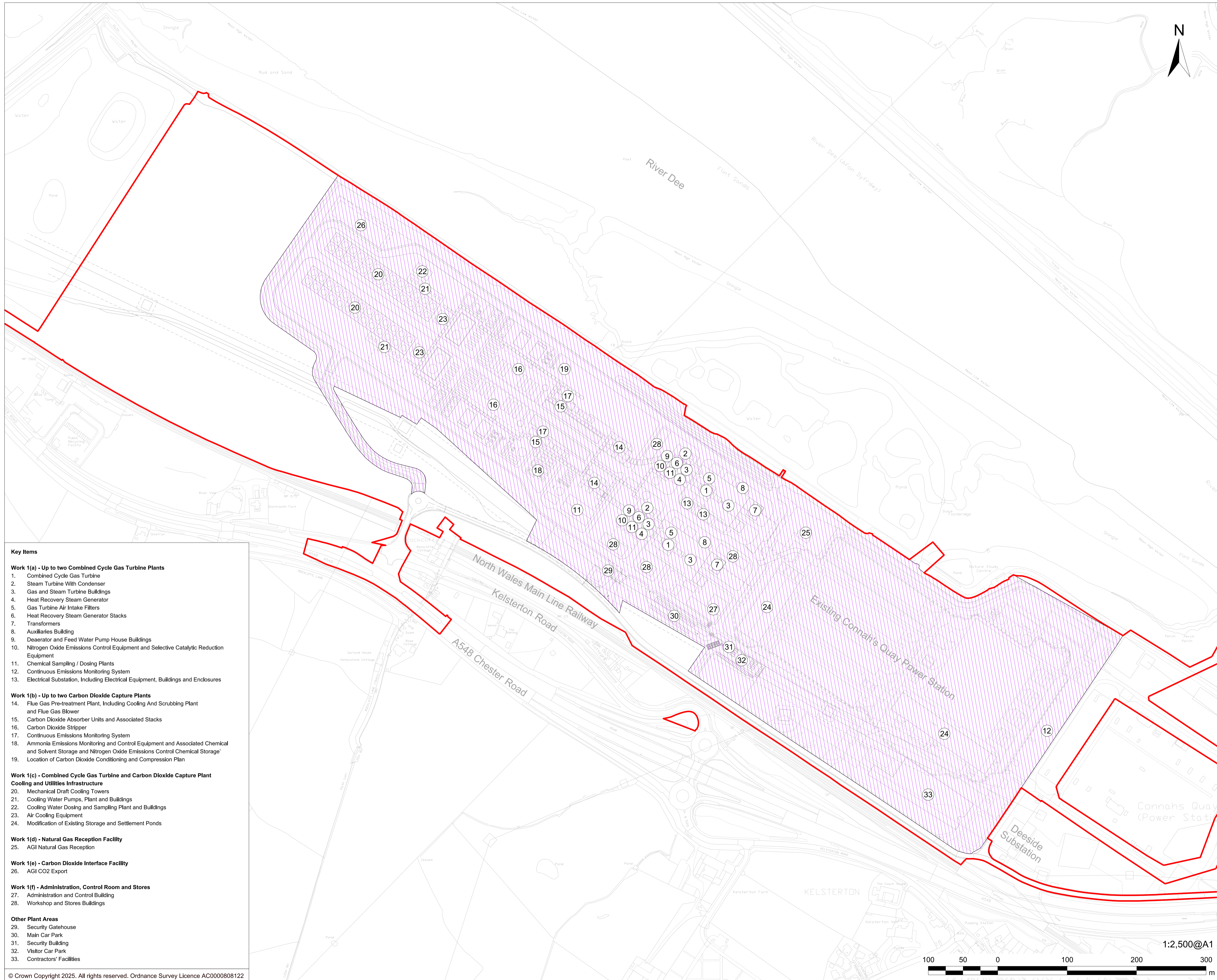
APFP Regulations 5(2)(o)

**SHEET TITLE**

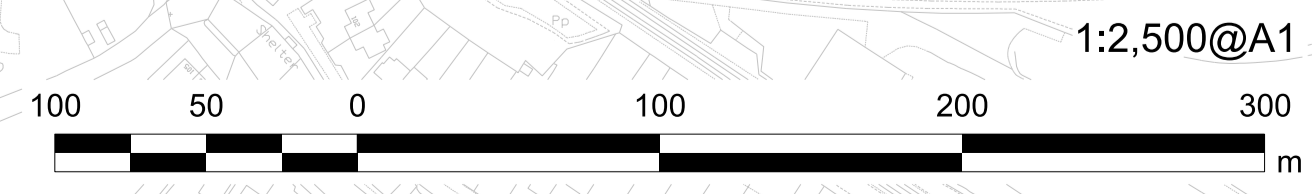
Indicative / Not for Approval  
Indicative Site Layout - Itemised  
Sheet 8 (Drawing 2 of 2)

**DOCUMENT REFERENCE NUMBER**

EN010166/APP/7.11



- Key Items**
- Work 1(a) - Up to two Combined Cycle Gas Turbine Plants**
- Combined Cycle Gas Turbine
  - Steam Turbine With Condenser
  - Gas and Steam Turbine Buildings
  - Heat Recovery Steam Generator
  - Gas Turbine Air Intake Filters
  - Heat Recovery Steam Generator Stacks
  - Transformers
  - Auxiliaries Building
  - Deaerator and Feed Water Pump House Buildings
  - Nitrogen Oxide Emissions Control Equipment and Selective Catalytic Reduction Equipment
  - Chemical Sampling / Dosing Plants
  - Continuous Emissions Monitoring System
  - Electrical Substation, Including Electrical Equipment, Buildings and Enclosures
- Work 1(b) - Up to two Carbon Dioxide Capture Plants**
- Flue Gas Pre-treatment Plant, Including Cooling And Scrubbing Plant and Flue Gas Blower
  - Carbon Dioxide Absorber Units and Associated Stacks
  - Carbon Dioxide Stripper
  - Continuous Emissions Monitoring System
  - Ammonia Emissions Monitoring and Control Equipment and Associated Chemical and Solvent Storage and Nitrogen Oxide Emissions Control Chemical Storage
  - Location of Carbon Dioxide Conditioning and Compression Plant
- Work 1(c) - Combined Cycle Gas Turbine and Carbon Dioxide Capture Plant Cooling and Utilities Infrastructure**
- Mechanical Draft Cooling Towers
  - Cooling Water Pumps, Plant and Buildings
  - Cooling Water Dosing and Sampling Plant and Buildings
  - Air Cooling Equipment
  - Modification of Existing Storage and Settlement Ponds
- Work 1(d) - Natural Gas Reception Facility**
- AGI Natural Gas Reception
- Work 1(e) - Carbon Dioxide Interface Facility**
- AGI CO2 Export
- Work 1(f) - Administration, Control Room and Stores**
- Administration and Control Building
  - Workshop and Stores Buildings
- Other Plant Areas**
- Security Gatehouse
  - Main Car Park
  - Security Building
  - Visitor Car Park
  - Contractors' Facilities



This drawing has been prepared for the use of GSDA's client. It may not be used, modified, reproduced or relied upon by third parties, except as agreed by GSDA or as required by law. GSDA accepts no responsibility, and denies any liability whatsoever, to any party that uses or relies on this drawing without GSDA's express written consent. Do not scale this document.